

NAMI

DRONE SOLUTION CATALOGUE

Nami Catalog



Women-
owned
businesses

2024 Nami Corporation

Businesses using microlights

Aerial Photography, 3D Mapping,
Safety Inspection, Drone Platforms



WHAT IS NAMI?

Nami has a wide range of applications
An innovator in providing
the best construction
solutions



For construction professionals
Customize your solution
Provide it directly.



Drone photography services



- ◆ Drone photography
- ◆ Drone Imaging
- ◆ Routine shots

Unmanned aerial surveying services



- ◆ Unmanned aerial orthophotogrammetry
- ◆ Telepresence features

Unmanned Aerial Vehicle Structural Safety Inspection



- ◆ Large and General Structural Exterior Inspections
- ◆ Ensure safety and accuracy

Build and sell drones



- ◆ Homegrown mapping drones
- ◆ RTK System Integration

Smart Construction Platform



- ◆ Homegrown platforms
- ◆ Construction Safety
- ◆ BIM

Run a drone school



- ◆ Microlight pilots
- ◆ Instructor Certification

Architecture should be left to professionals who can express space and its forms.

(Ltd. is expanding its business fields step by step in 2015. Ltd. promises to provide the best one-stop service (OSS) for construction project management (CM) and drone utilization service business, from building design, structural calculation and building maintenance to facility safety inspection, surveying, imaging, and 3D ortho mapping using drones, which are the main players in the 4th industrial revolution.

Reviewing drone services, creative design, and comfortable and safe spaces to reflect the changing times,
We will provide high-quality construction services based on the trust that comes from continuous follow-up.



"Aerial rescue and safety diagnostic drone photography should be left to professional operators with legal

Business aircraft must be registered with the appropriate local aviation authority and issued a declaration certificate.

In addition, you must purchase the insurance prescribed by the Ministry of Land, Infrastructure, and Transport decree, and after receiving safety certification, you must purchase the

You can obtain a separate aerial photography permit from the Department of Defense in advance.

Ltd. is a fully licensed and professional company with all the right permits, and we have gone through the legal process to ensure that the
We provide the best service you can count on.



2024 Nami Corporation

Ultralight flight device usage business, drone

utilization service

Aerial Photography, 3D Mapping, Safety Diagnostics,

Nami Homepage: www.namiane.com

Agricultural Support, Drone Platforms

Patents and certifications

PATENT



나라장터
조달청 다수공급자 계약업체

항공촬영 · 3D맵핑 · 안전진단
NAMI
Architecture & Engineering

세부품명 : 무인기촬영서비스 (7811159901) **공급**

**규격 : 무인기촬영서비스, 나미, 동영상4K이상, 기체규격(300mm이상), 일
반촬영**

식별번호 : 24155743 **다수공급자계약**

회사명 : 주식회사 나미 [중소기업]

원산지 : 대한민국

계약종료일 : 2024/03/25 | 납품기한 : 10일(납품요구일로부터)

납품장소 : 전지역(제주 및 도서산간지역 운임비 별도)

우선(의무)구매대상 :

800,000 원



항공촬영 · 3D맵핑 · 안전진단
NAMI
Architecture & Engineering

세부품명 : 무인기촬영서비스 (7811159901) **공급**

**규격 : 무인기촬영서비스, 나미, 사진RGB 4K이상/별화상640×512이
상/기체규격(300mm이상)/안전점검(촬영)**

식별번호 : 25516442 **다수공급자계약**

회사명 : 주식회사 나미 [중소기업]

원산지 : 대한민국

계약종료일 : 2027/09/27 | 납품기한 : 10일(납품요구일로부터)

납품장소 : 전지역(제주 및 도서산간지역 운임비 별도)

우선(의무)구매대상 :

2,200,000 원



항공촬영 · 3D맵핑 · 안전진단
NAMI
Architecture & Engineering

세부품명 : 무인기촬영서비스 (7811159901) **공급**

**규격 : 무인기촬영서비스, 나미, 동영상4K이상, 기체규격(300mm이상), 특
수촬영**

식별번호 : 24155744 **다수공급자계약**

회사명 : 주식회사 나미 [중소기업]

원산지 : 대한민국

계약종료일 : 2024/03/25 | 납품기한 : 10일(납품요구일로부터)

납품장소 : 전지역(제주 및 도서산간지역 운임비 별도)

우선(의무)구매대상 :

2,800,000 원





Total photography services using drones

Based on the shooting know-how acquired in the field over the years, Nami will provide customers with the best shooting service to record precious moments forever. The need for drone photography is increasing in various fields such as companies, architecture, cultural properties, and events. Nami prioritizes safety and responsibility, and is a professional company that has completed the business of using ultra-light flying devices and the registration of ultra-light flying devices.



Take drone photos

High-quality aerial photography at 24 megapixels or higher, including bird's-eye views, panoramas, landscapes, and more



Capture drone footage

4K, 5.1K high-definition video capture
Shooting logs for professional video editors

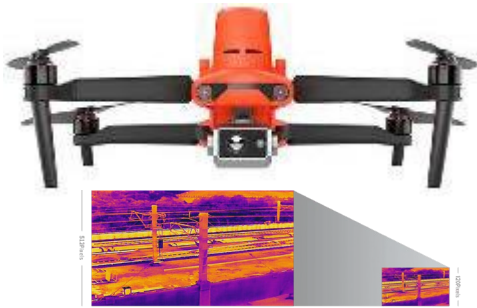


Routine shots

For long-term construction site management
Monthly, weekly, regular, irregular shooting
With the right shot in the right place every time
Analyze time series data over time



Introduction to shooting equipment



NA DRACO-GH

- Auto-recharge
- Precision landing
- Gimbal camera video recording
- Quadcopter
- Maximum takeoff weight: 5.8KG
- Maximum flight time: 70 minutes (aircraft itself) / 35 minutes (fully loaded)
- Positioning: Dual-GPS.RTK
- GCS Remote Control
- IP53 waterproof rating

NA Nalda-gh-16

- Training drones
- hobbywing x8 motors
- Juper T18 Controller
- Frsky X8R Receiver
- 30 minutes maximum flight time
- Maximum takeoff weight 34 kg
- holybro pixhawk4

EVO II Dual 640T RTK 8K

- Equipped with a 24-48 mm optical zoom camera
- Front, rear, left, right, and downward-facing obstacle detection sensors
- Hyperlappable
- 48MP 1/2" CMOS sensor
- 48MP ultra-high resolution photos
- 640*512 thermal imaging sensor and 8K ultra-high definition visible light camera for accurate temperature measurement

The KH-600F is equipped with high-precision optical/infrared (EO/IR) day and night surveillance cameras to automatically identify, track, and locate targets in real time. High-resolution 1080p FHD video can be transmitted and received in real time. One ground control system (GCS) can simultaneously control two VTOL drones flying for long periods of time and over long distances, optimized for reconnaissance, and can be used in various fields requiring long reconnaissance, such as military base defense area reconnaissance, illegal fishing boat interdiction, forest fire reconnaissance and prevention, and illegal



Precision surveying services using drones

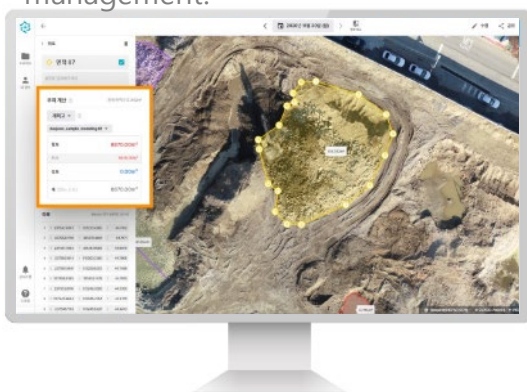
This is a service that monitors the site with a drone by an experienced professional pilot, allowing you to get the perfect results without any additional work. It is a service required for sites where it is difficult to operate drones directly due to the size, location, and terrain of the site, and is especially suitable for mountainous areas with poor terrain, large-scale bridge construction, and power plants.

PROCESS



Homegrown software

Based on Nami's drone data platform, we are connecting various site data such as BIM, IoT, mobile, CCTV, and 360° panoramic images to realize true smart site management.



Automatically calculate earthwork volumes



Automatic report generation

Precision structural safety inspection service using drones



Definition and Scope of Unmanned Aerial Vehicle Structural Safety Inspection

- Dedicated drones for facility inspection based on unmanned vehicle technology to diagnose the exterior condition of large and general structures (bridges, nuclear power plants, dams) that are inaccessible to maintenance personnel as part of the instrumentation technology for structural maintenance.
- Designing and building a drone with a forward payload to address the limitations of the upward viewing angle and arbitrary shooting upward angle to make facility safety inspection missions more professional and efficient.

Participated in the National Safety Audit of Suwon City in 2022 and 23

MOLIT-sponsored Smart City Innovation Technology Discovery Project
Join the Suwon City Consortium



Features of the technology



- ◆ Get a closer look with high-resolution cameras
- ◆ Fast and efficient inspections with unmanned technology
- ◆ Access from multiple angles

Applications



- ◆ Inspect the safety of structures such as skyscrapers, bridges, roads, tunnels, etc.
- ◆ Inspecting and assessing damage after a natural disaster

Safety and reliability



- ◆ Thorough inspection and evaluation by a team of experts
- ◆ Accurate diagnostics with the latest technology and equipment



Smart Construction Platform

Nami's Smart Construction Control Center platform for **safety**, **process**, and **quality** management on construction sites

Smart IOT technologies



- ◆ Integrate smart devices and control platforms to collect and analyze field data can be collected and analyzed
- ◆ With a smart construction platform real-time process and safety management

AI-based real-time video analysis

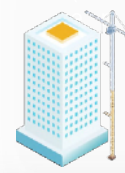


- ◆ Onsite Safety and Security Vulnerabilities in real time Unattended monitoring
- ◆ AI-driven incident risk situations Detection and Alerting Minimize incidents

NAMI
PLATFORM



Leveraging B I M Technology



- ◆ Introducing 3D virtual space-based construction modeling simulation
- ◆ Planning, design, construction, and supervision, Maintenance Construction Information Management
- ◆ Streamline construction decision

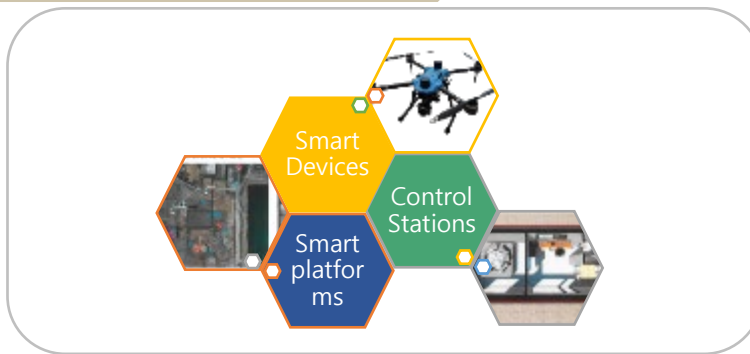
Real-time drone monitoring (3D Machine Guidance)



- ◆ Utilizing Drones A Modern View of the Field 2D,3D monitoring
- ◆ Optimized drone routes in a few clicks Optimized flight paths for your drone Autonomous flight and filming

Smart construction platform real-time monitoring data management

Smart construction system components



Autonomous driving, autonomous charging



Analyzing time series data



UAV imagery
Upload and playback made easy

Remotely via video
Monitoring site conditions and issues

Reduced travel time and labor savings

2D monitoring



3D BIM monitoring



Video-based monitoring



High-resolution ortho images

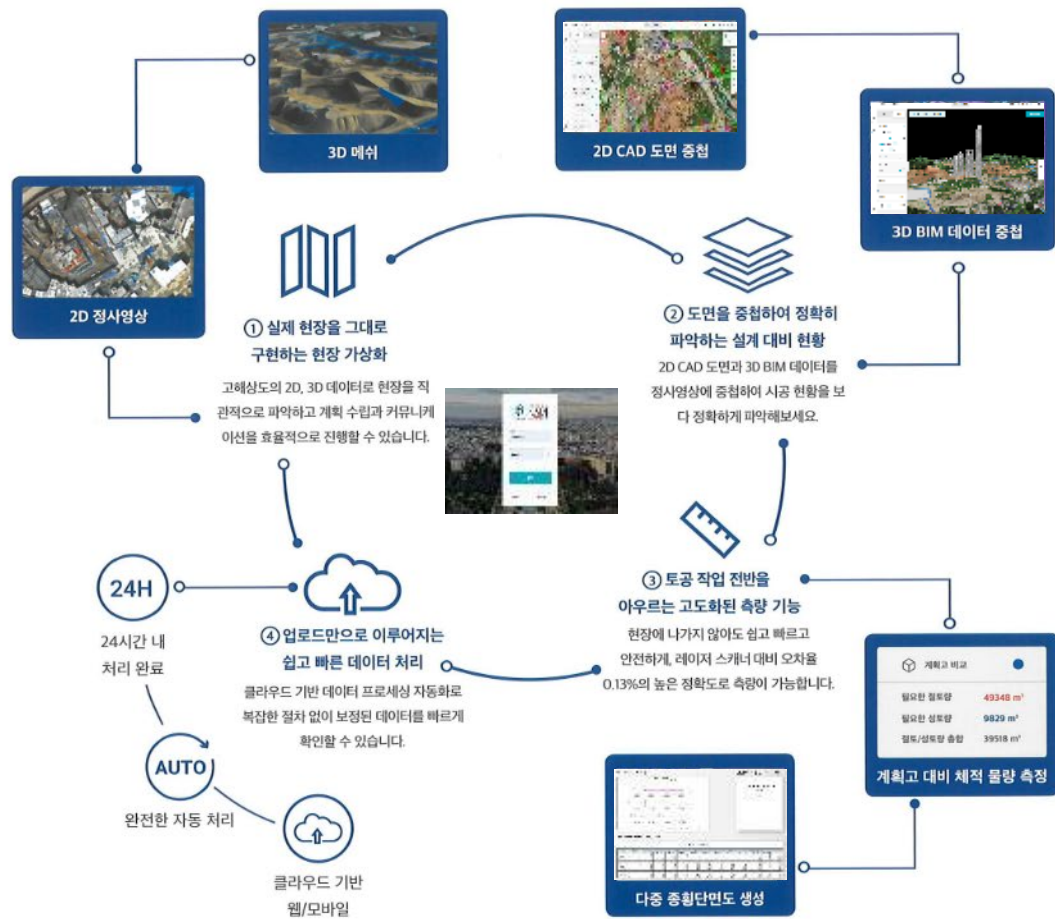


The power of the Nami platform



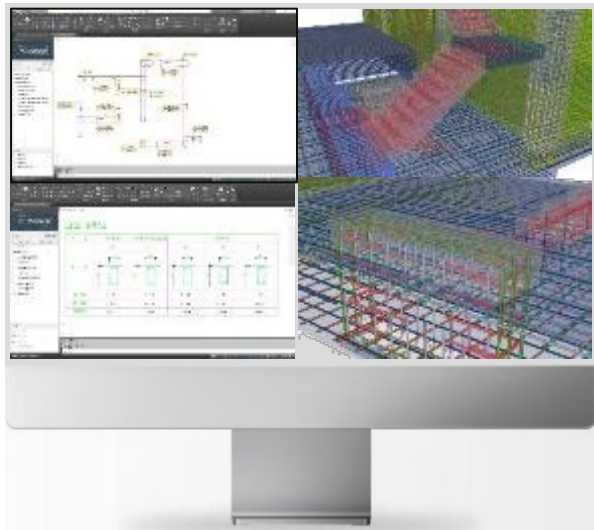
The power of Nami's platform

현실감 넘치는 현장 모니터링, 빠르고 정확한 측량 기능으로 현장 업무의 생산성 향상을 직접 경험해보세요.



Nami Platform use cases in the field





2D→3D Transition design

Featur

You can speed up model creation time and

Can reduce errors during modeling

Also, during the transition, you can preview your drawings

Check to list errors in the 3D model

Effects

Recognizes 2D structural drawings
and lists to create

Create a 3D model

Quantity calculation

Featur

From the 3D model generated by Transition Design

Quantity calculation

Effects

Compared to the traditional method of calculating volume through

More accurate data (plus or minus 1% error)

See what you want in real time by member, section, or floor

Automatically calculate concrete, rebar, and formwork quantities

Calculate quantities based on the type of structure, such as RC, PC, etc.



Create Rebar Shop Drawings

Featu

From the 3D model created through Transition Design

Create RC construction drawings and PC fabrication drawings

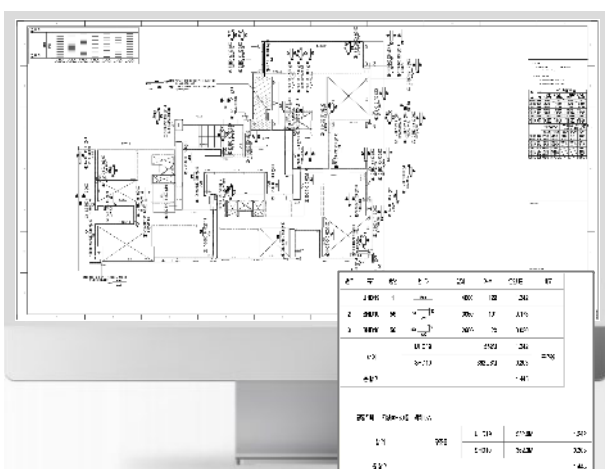
Effect

Because you are creating a drawing from a 3D model, the
Model and drawing match exactly.

Generate floor plans as well as cross-sections in real time

Changes made due to on-site conditions are also included in the

All drawings are labeled and traceable





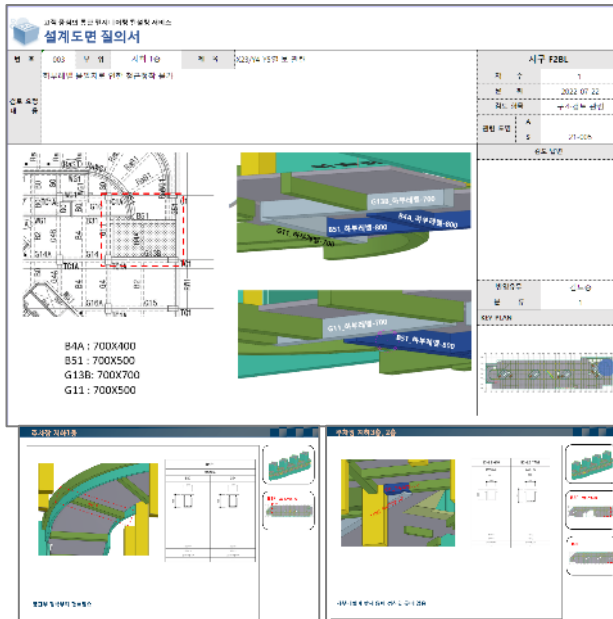
Model Check

Featur

All information about the structure is consolidated into a single model, which
Because it's managed, it's not just the rebar duplication that occurs within the
Interference with other processes (construction, plumbing) can also be checked
It also calculates the amount of rebar for each member of the structure and

Effects

Check for interference in advance to avoid issues that may arise during the
You can proactively block them and minimize the cost of fixes that result from
Analytics reports can help you find and fix any issues that might be causing
Proactively block hazards that may arise during construction.



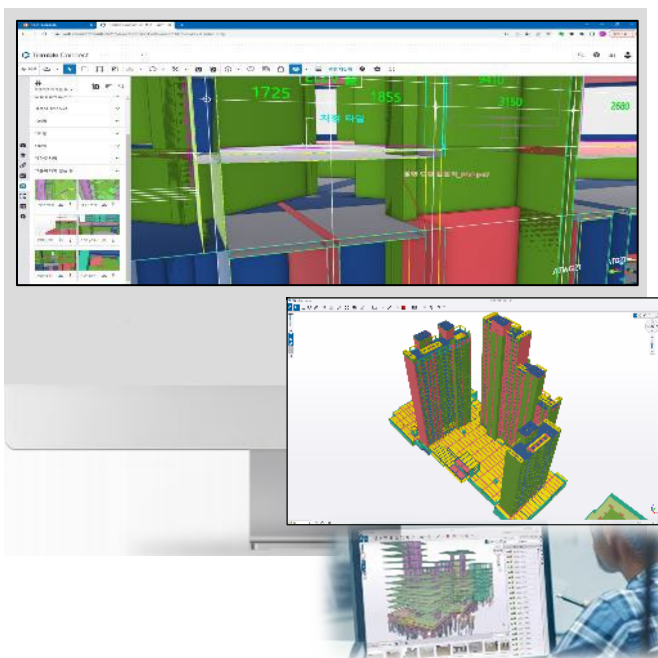
Collaboration and integration

Feat

All construction information in one unified database
Can be saved and managed
This ensures that the people responsible for each process are aware of the
Share the same information and collaborate

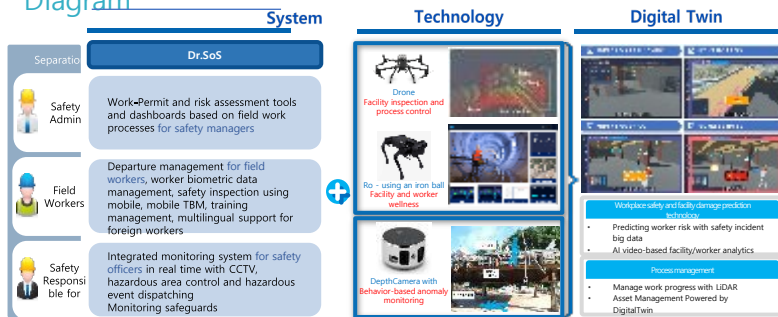
Effec

Reduce miscommunication and redundancy of information,
Collaboration processes are efficient.





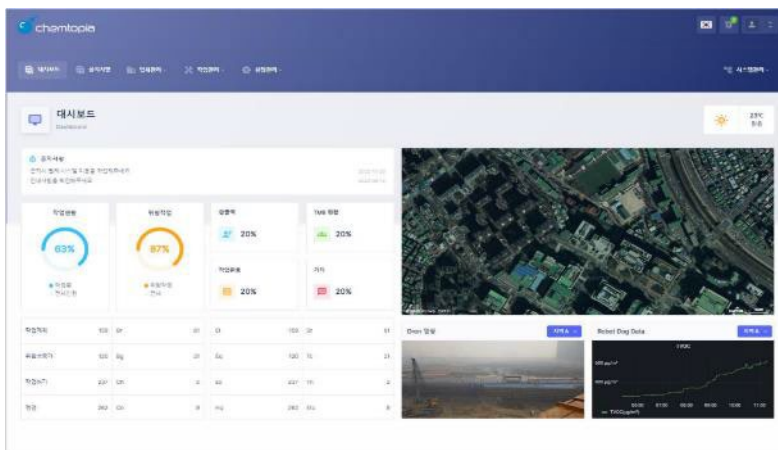
Dr.SOS Configuration Diagram



Dr. SOS

Smart Field Management Solutions (Smart On-site Management Solution). It supports risk assessment, mobile TBM, and safe work permit creation using web/mobile, and supports safety management monitoring by identifying risks through on-site risk assessment, and provides an integrated platform that can be utilized in various fields such as process and asset management and safety prediction technology through IoT.

Dr.SOS Main Screen



Health monitoring service diagram

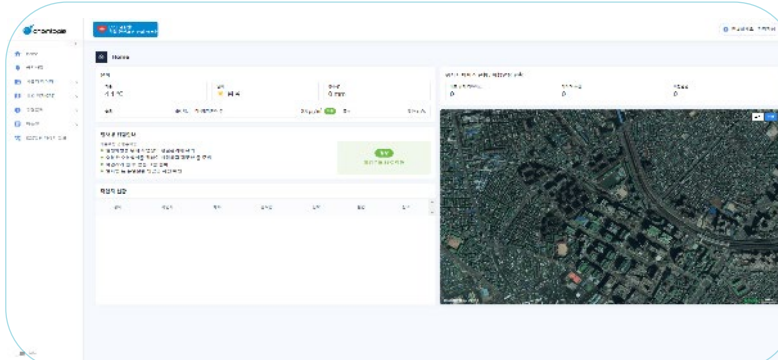


Dr. Health

Health monitoring services

It is a healthcare monitoring service for industrial sites and vulnerable groups that prevents risk factors by collecting and analyzing users' vital signs based on smart IoT.

Health Monitoring Service web screen





위험성평가, TBM을 지체 예방과 재발 방지의 핵심수단으로 강화

Mobile TBM App screens and processes

Mobile TBM PROCESS

01 위험성 평가 작성
02 위험성 평가 결과 확인 / 관리대책 / 관리계획 수립
03 QR / NFC
04 TBM
05 작업지시
06 작업종료

현장 위험성 평가의 추적 관리를 App에서 손쉽게 수행하며 모바일 툴박스 미팅을 지원하는 "모바일 TBM"

Safety Management Solutions

Toolbox meeting (TBM) is a necessary procedure to prevent safety accidents by predicting hazards that may occur during work and establishing countermeasures on site before work. Mobile TBM is a service that supports the creation of risk assessments while easily managing these TBMs on the go.

Onsite Risk Assessment and Management (App)

Improvements for potential pitfalls and Action Management (Web)

Perform a "Mobile TBM"

Mobile TBM

Measures to establish and implement a safety and health management system, which is the main point of judgment in the event of a major accident, and the employer as a contractor

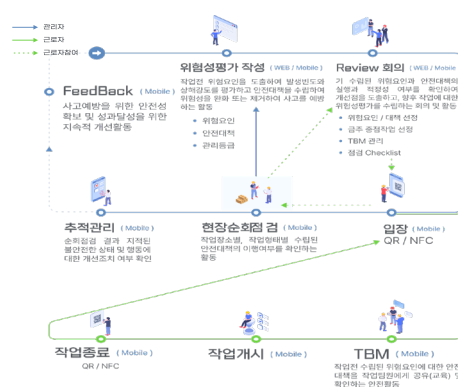
Responding to worker safety concerns to prevent occupational injuries

Assistance with creating on-site risk assessments

chemtopia

Manage tracking of on-site risk assessments
It's easy to do in your app and Mobile toolboxes that support meeting

Mobile TBM



Nami's self-made drones



NA DRACO-GH-based mapping system

The Versatile NA DRACO-GH Gas



NAMI's [Draco-GH](#) drone is designed for use in a variety of applications, including construction sites, law enforcement work, and the mapping industry.

With stable flight performance and long flight time, the [Draco-GH](#) drone is designed and developed in-house, including all components, software, and can be customized to your specific requirements. Standard equipment includes a variety of cameras, searchlights, and speaker systems.

[Draco-GH](#) provides a Quick Release system for cameras, allowing you to easily swap out different cameras with a click, release, and plug-in. [Draco-GH](#) can use many different types of cameras, ranging from typical full HD cameras to 4K EO/IR cameras. Depending on the application, customers can choose the best camera to meet their needs.

[Draco-GH](#) is designed to provide strong thrust despite its low power, enabling long flight times. Equipped with dual GPS modules, our drones receive signals from GPS, GLONASS, Galileo, and BeiDou, providing high-precision positioning without the need for an RTK system. This also means more stable flight in electromagnetic field environments such as power transmission towers.

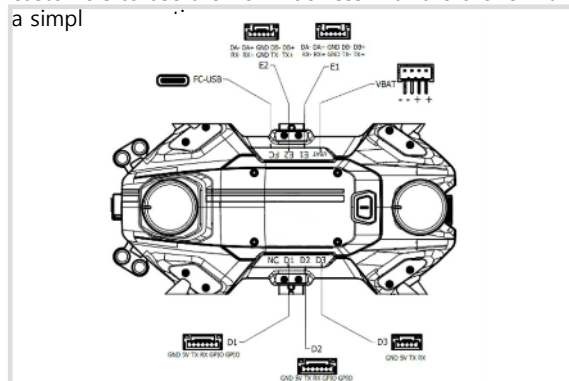
The [Draco-GH](#) is compatible with NAMI's Drone Station for autonomous, continuous mission flight. Drone Station automatically recharges the drone's battery, allowing it to fly back-to-back missions without human intervention.

With a long flight time and easy-to-replace battery, the [Draco-GH](#) is ideal for long-term operations. It also supports a wide range of payloads, from cameras to speaker systems, allowing it to be customized for a variety of applications. It is designed to work with LTE, Wi-Fi, and other OFDM modules, making it flexible and adaptable to a variety of communication systems.

The [Draco-GH](#) can be interfaced with RTK systems and with its excellent flight time, it can map large areas accurately and in less time, making your entire operation more productive.

The [Draco-GH](#) can be interfaced with RTK systems, and with its excellent flight time, it can map large areas accurately and in less time, making your entire operation more productive.

The [Draco-GH](#) provides an external I/O port, allowing customers to use their own devices with the drone with a simpl



NA Draco-GH Technical Data	
크기 (W X L X H)	590 x 575 x 285 (mm)
모터 개수	4
드론 형태	Quadcopter
축간 거리	780mm
배터리 용량	10,000mAh
무게 (Dry)	1.6kg
배터리 탑재 무게	2.8kg
최대 이륙 중량	5.8kg
최대 비행 고도	1.5km
최대 비행 속도	45km/h
최대 내풍속	15m/s
최대 비행시간 (장비 : 500g)	>45min
최대 이착륙 속도	6~10m/s (변경 가능)
최대 회전 속도	60° /s
동작 온도	-10℃ ~ 50℃
IP 등급	IP43
GPS 시스템	Dual GPS-GPS, GLONASS Galileo BeiDou
위치 정확도	±20cm
Failsafe	- Battery Failsafe - Signal Loss Failsafe
기타	장애물 회피 (선택사항)

About Nami Drone Parts

Controller-AVIATOR



The [AVIATOR](#) remote controller is designed to control your drone within a visual line of sight (VLOS) of up to 10 kilometers using OFDM communication. With this advanced communication system, you can be confident that your drone is responsive and connected, both near and far. AVIATOR is the perfect controller to ensure your drone is fully controlled from anywhere.



Lens Series

ADTi Surveyor 42L



The [ADTi Surveyor 42L](#) camera is a solution for advanced mapping that delivers superior accuracy and precision. Featuring a 42MP Sony BIONZ X full-frame sensor, the camera ensures excellent image resolution for drone mapping applications. The camera's automatic distortion correction feature, combined with low distortion lenses, ensures the best possible mapping results.

When used in conjunction with the PPK GNSS module, the [ADTi Surveyor 42L](#) camera provides a ground sampling distance of 0.7 cm/pixel, bringing the highest level of accuracy and precision to mapping and surveying projects. Weighing in at a lightweight 151 grams, it is a versatile tool for professionals who need accurate mapping data at an affordable price.

One of the unique features of the [ADTi Surveyor 42L](#) camera is that it is an interchangeable lens camera, meaning it requires a separate lens for use. Our selection of full-frame lenses includes 35mm, 40mm, 50mm, and 56mm options, allowing you to choose the perfect lens for your specific mapping and surveying needs. Whether you're mapping construction sites, conducting survey projects, or performing other mapping tasks, the [ADTi Surveyor 42L](#) camera is the perfect tool for delivering reliable and accurate results. The [Surveyor Max 61S](#) camera is our most advanced mapping solution designed to deliver professional-level accuracy and precision. With an impressive 61MP full-frame CMOS sensor, the camera captures highly detailed images to deliver more accurate mapping data than ever before. The high pixel count ensures that you get accurate mapping results even in the most challenging conditions. Whether you're working on large-scale construction projects or complex surveying tasks, the [Surveyor Max 61S](#) camera is the perfect tool for achieving the highest levels of mapping accuracy and precision.

ADTi Surveyor Max 61S



The [Surveyor Max 61S](#) camera is a key aerial mapping tool with advanced features, supporting FE, E and A-mount lenses (adapters available) for unprecedented flexibility in lens selection. The Sony BionzX image processor and built-in Multi-Interface Hot-Shoe output for PPK ensure the best possible dynamic range and extremely low noise, while electronic autofocus at 10 frames/second and 4K video capability allow you to capture high-quality, high-resolution images and video. The [Surveyor Max 61S](#) camera is our most advanced mapping solution, offering unparalleled accuracy, precision, and flexibility for your aerial mapping needs.



Nami Drone Training Ce

Drone National Certification Course
 (Microlight pilot, instructor certificate, practical evaluator certification)

Military / Police / Fire / Military (drone bot units) / Construction / Employment / Agriculture / Inc
 Hobby / Aerial imaging / Safety diagnostics

You'll be able to take the course for free, until you

- 20 hours of large drone flying to qualify for the practical test
- Accountability training leading up to the day of the test, and taking the practical test with the practiced airframe
- Highest certification pass rate - no additional fees until you pass
- Employment/Field-Relvant Specialized Drone Specialization

Training courses	Course Fees	Training Description
Early Morning/Mid Morning/Afternoon (2-4 week courses)	250,000 KRW	1. Theory
Weekend Classes (5-week course)	300,000 KRW	2. Simulation 3. Flight Simulator

NAMI DRONE
 A C A D E M Y

Support line

☎ 031-715-4556 070-9077-0825

📍 Directions to the flight training center: 1200

Homasil-dong

항공촬영 · 3D맵핑 · 안전진단

NAMI

Architecture & Engineering

Start smart

Safety, process, and quality management for construction sites
Smart Construction **Control Center** Platform

Achieved ZERO construction
safety accidents!

■ Company name: Nami Corporation (NAMI)

■ Business areas: structural safety assessment, architectural and civil engineering services, facility maintenance, building design, BIM,
Drone photography services, research and development (R&D)

■ Business Address: 77,513, Changryong-daero 256beon-gil, Yeongtong-gu, Suwon-si, Gyeonggi-do,
tel. 031.715.4556 fax. 031.716.4556

Republic of Korea (1286, Lee-dong, Ace Gwanggyo Tower 3F)

You can receive various information through Nami's website. Specifications in this publication are subject to change without notice.

Please check with the Help Desk for more information on any changes. We are not responsible for any printing errors or misprints in the content of this publication.

Nami Corporation

www.namiane.com

Customer service unified contact center (including service)